

# VEGAMAG 62

## Magnetic Level Indicator



### General

**Chamber Configuration** See chart on back

#### Materials

- Chamber 304/L, 316/L, 317 321, 347 stst Monel, Titanium, Hastelloy C, CPVC, Custom  
 - Float 316 SS (Std.), Titanium, Hastelloy, Plastic

**Chamber Size** 2" (Std.), 2 1/2", 3", 4", Custom

**Flange Class** ANSI 150#, 300#, 400#, 600#, 900#, 1500#, 2500#

**Vessel Connection** 1/2", 3/4", 1" (Std.), 1 1/4", 1 1/2", 2", 2 1/2", 3" Schedule 10 and 40 extruded tee available

**Top Connection** 1/2", 3/4", 1", 1 1/4", 1 1/2", 2" (Std.), 2 1/2", 3"

**Transmitter Options** VEGAFLEX 61 (Std.), VEGAFLEX 62, VEGAFLEX 65, VEGAFLEX 66, VEGAPULS 62, VEGAPULS 63, VEGAPULS 66

**Vent/Drain** NPT Drain only, Side Vent and NPT Drain, Bleed Ring Vent and NPT Drain

### Mechanical

**Weight** Application dependent

**Overall Length** Up to 50' (15 m) Consult factory for lengths over 50'

**Accuracy** ± 0.1" (±3 mm)

**High Temperature Options** Insulation blankets, electric heat tracing, cryogenic insulation, and freeze protection, etc.

### Indication

**Style** Wide Flag

**Indicator Flags** Magnetically actuated high temperature stainless flags in yellow/black also other colors available

**Flag Assembly Seal** Gasket (Std.)

**Scale Options** Etched stainless steel with either height, volume, or percentage units

**Visual Indication** Easily visible from 200 feet

The VEGAMAG 62 combines the benefits of the VEGAMAG 61 magnetic level indicator, VEGAPASS 61 bridle chamber, and the proven technology of the VEGAFLEX to provide the most complete visual and guided wave radar package in the industry. This offering includes mounting configurations for most standard tank process connections. If interface measurements are required, additional process connections can be provided to ensure the most accurate measurements.

### Features

- VEGAFLEX or VEGAPULS transmitter options
- Innovative flag design maximizes magnetic field
- Wide flags for enhanced indicator view
- Impact-resistant polycarbonate indicator window
- Corrosion-resistant moving parts
- Wide variety of materials
- Fabricated to ASME 31.1/31.3 standards
- Dual chamber design
- Glass or impact resistant polycarbonate indicator window

### Approvals

This instrument is suitable for use in hazardous areas and is approved according to ATEX, FM, CSA, NACE, CRN, and IEC standards.

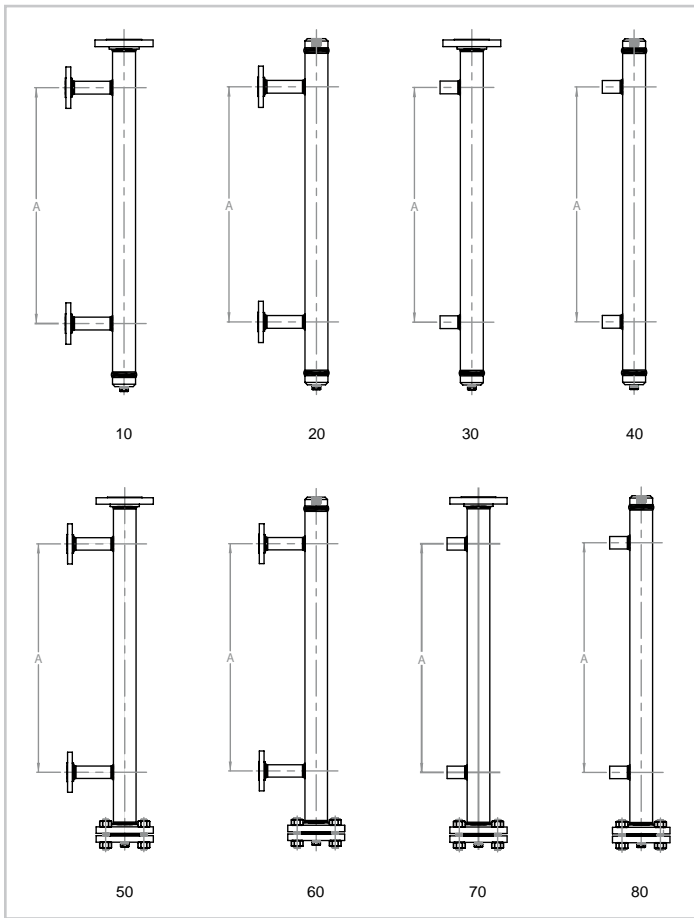
### Environmental

**Process Temperature** Transmitter: -320° to 752°F (-195° to 400°C)

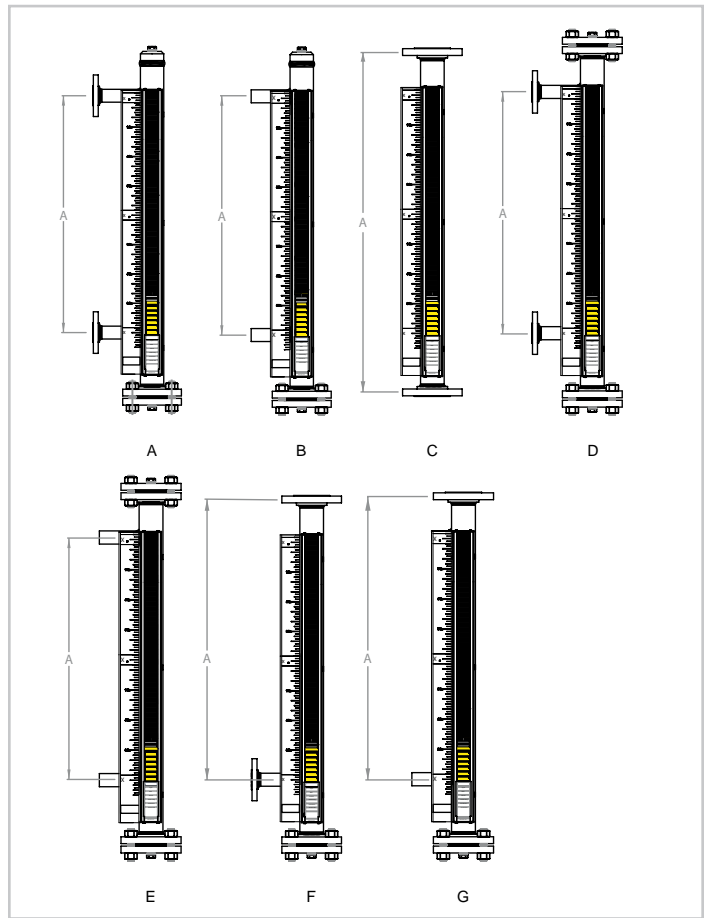
**Process Pressure** Full vacuum to 5,800 psi (400 bar)

**Specific Gravity Range** As low as 0.35 S.G.U.

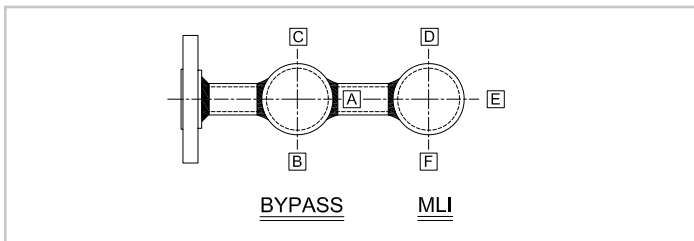
## Chamber Configuration



## MLI Styles



## MLI and Bypass Chamber Locations



## Information

Further information about VEGA products is available at [www.vega-americas.com](http://www.vega-americas.com).